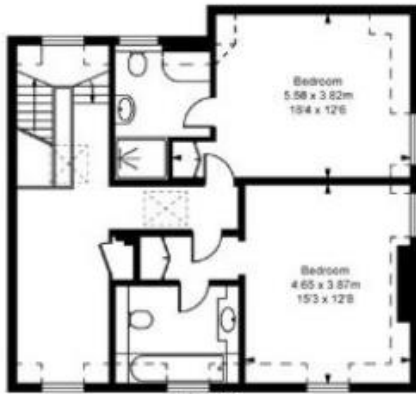


Upper Brook Street, W1K

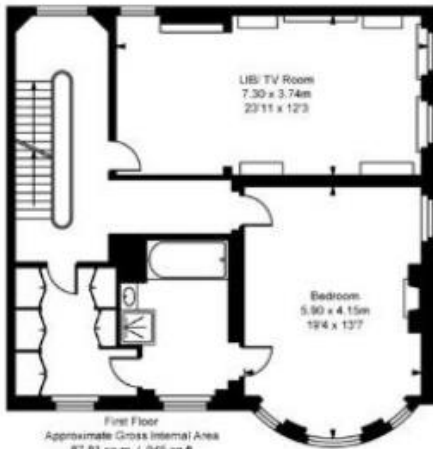
Approximate Gross Internal Area
 425.94 sq m / 4,585 sq ft
 Vault
 28.66 sq m / 308 sq ft

Total Areas Including Vault
 454.60 sq m / 4,893 sq ft

(Including restricted height
 under 1.5m [- - - -])
 (CH = Ceiling Heights)



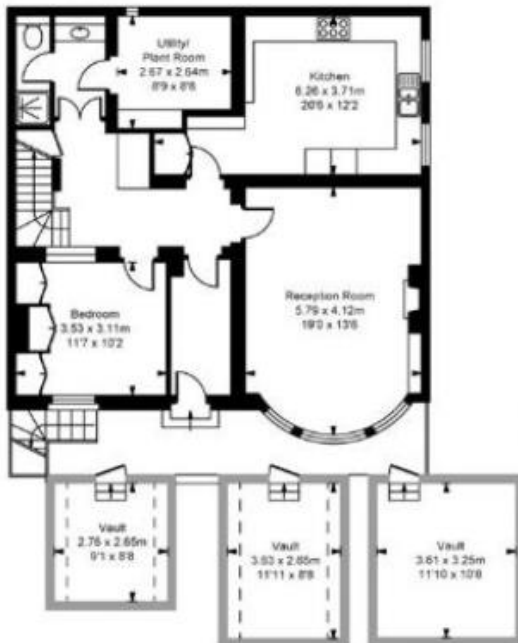
Third Floor
 Approximate Gross Internal Area
 75.94 sq m / 817 sq ft



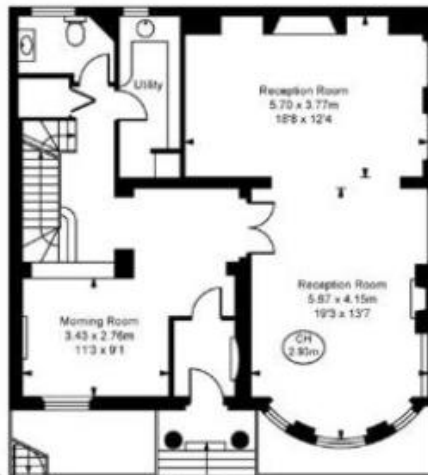
First Floor
 Approximate Gross Internal Area
 87.81 sq m / 945 sq ft



Second Floor
 Approximate Gross Internal Area
 80.32 sq m / 861 sq ft



Lower Ground Floor
 Approximate Gross Internal Area
 86.48 sq m / 931 sq ft



Ground Floor
 Approximate Gross Internal Area
 87.39 sq m / 941 sq ft

ILLUSTRATION FOR IDENTIFICATION PURPOSES ONLY
 ALL MEASUREMENTS ARE MAXIMUM, AND INCLUDE WINDOW BAYS AND WARDROBES WHERE APPLICABLE
 THIS PLAN MUST NOT BE REPRODUCED BY ANY OTHER PERSON WITHOUT PERMISSION